

Review Article

Combined Approach of Mammography and Sonomammogram in the Evaluation of Breast Lesion and Correlation with Histopathology

Anitha B

Assistant Professor, Department Of Radiodiagnosis, Adichunchanagiri Institute of Medical Sciences,
B G Nagara, Nagamangala Taluk, Mandya, Karnataka State, India.

Received: 21/09/2016

Revised: 13/10/2016

Accepted: 17/10/2016

ABSTRACT

Introduction: Breast carcinoma is the second leading cause of Mortality in India. Incidence of Breast Carcinoma is 1 in 22 in India and in USA 1 in 8. ⁽¹⁾ The increased incidence of Breast Malignancy parallels an increase in the use of screening Mammography and Sonomammogram.

Methodology: Screening Mammography results in decreased Mortality due to early detection and effective therapy. Screening Mammography is indicated in women aged 40 years and older. In less than 40 years Mammography indicated in patients with Lumps, followed by Sonomammogram and correlated with Histopathology.

Conclusion: In 100% of the cases combined approach of Mammography and Sonomammogram was able to distinguish Benign and Malignant when correlated with Histopathology.

Key words: Breast, Mammography, Sonomammogram.

INTRODUCTION

Incidence of Breast cancer is increasing in most of the countries especially Developing countries like India.

Multiple risk factors are identified as Late age at first pregnancy(>30 years),single child, Late age at menopause, high fat diet, nulliparous, obesity in menopause, reduced physical activity, Family history. ⁽²⁾

Physical activity, awareness about beneficial effects of consuming fresh vegetables and fruits are protective factor for Breast malignancy. ⁽²⁾

METHODOLOGY

Mammography and sonomammography will be performed as an initial imaging examination using

- Siemens Mammomat 3000 Nova equipment in two views(i.e., cranio-caudal & medio-lateral oblique views)

- High resolution, 7.5-12 MHz, linear array transducer of esoate MyLab 40.

BIRADS Classification by ACR, last updated in November 2015. Widely accepted risk assessment and quality assurance tool in mammography, sonomammogram, MRI. ⁽³⁾

BIRADS 0: further imaging is required. Special mammographic views (compression, magnification), ultrasound.

BIRADS 1: negative,

BIRADS 11: benign findings (cyst, fibroadenoma, lipoma, secretory calcifications)

BIRADS111: probably benign, short interval follow-up suggested (6 months)

BIRADS1V: suspicious abnormality.

BIRADS 1Va: low level of suspicion for malignancy

BIRADS 1Vb: intermediate suspicion for malignancy

BIRADS1Vc: moderate suspicion for malignancy

BIRADS V: mammographic appearance highly suggestive of malignancy (speculated margin, pleomorphic calcification)

BIRADS VI: known biopsy proven malignancy

Risk of cancer:

BIRADS 111:~2%

BIRADS 1V:~30%

BIRADS V: 95%

Mammography

Mass shape: round, oval, lobular in benign

Lobular in suspicious

Irregular in malignancy

Mass Density: fatty, low, iso in benign

Iso in suspicious

High density in malignancy

Calcification: diffuse, scattered, coarse, pop corn, egg shell calcification, tea cup in benign Fine, linear, branching, pleomorphic, segmental in malignancy architectural distortion, nipple retraction in malignancy (4)

Sonomammogram: Well defined, anechoic, ellipsoid, thin echogenic wall, posterior enhancement, smooth margin in benign lesion.

Hypoechoic, angular margin, spiculation, microlobulation, internal calcification, posterior acoustic shadowing in malignant lesion. (5)

RESULTS

Out of 55 cases, 35 cases were diagnosed as benign, 20 were diagnosed as malignancy. Fibroadenomas were most common (16) among benign lesions followed by fibrocystic disease (10 cases) and cyst (6 cases). One case each of benign intraductal papilloma and Seroma, one case of Granulomatous mastitis and pathologically malignant lesions included Ductal carcinoma insitu, Atypical Ductal hyperplasia, infiltrating ductal carcinoma, Lobular carcinoma.

Combining the mammography and sonomammogram, sensitivity, specificity were 92.2%, 98.02% respectively.

DISCUSSION

Sensitivity of Mammography is low for benign lesions especially in dense

braests and very small lesions.sensitivity and specificity for malignant lesions are high because microcalcifications are better detected. Similar observations were seen by study by Prasad et al (6) and Sabine M et al. (7)

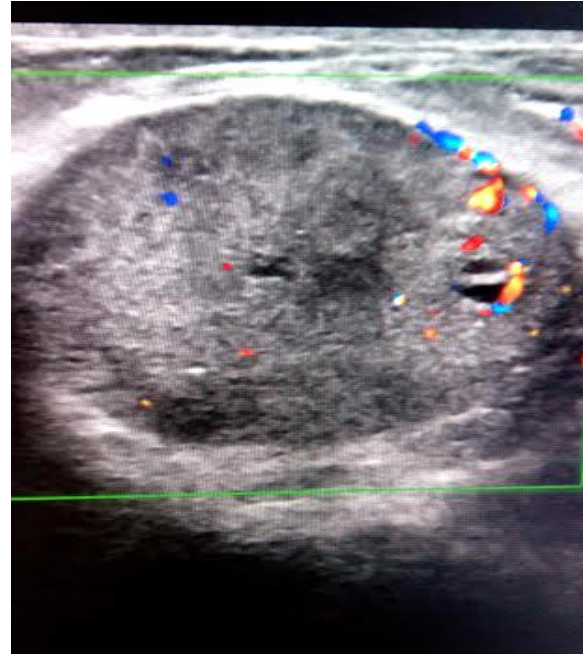


Figure 1:Sonomammogram: Well defined, round to ovoid homogenous lesion in Left Breast at 4-5 Clock position measuring 4.31x3.8cms with distal enhancement and mildly increased diffuse vascularity possibly Fibroadenoma- Lesion is not ellipsoid, so BIRADS I V A. Histopathology report-Fibroadenoma with Benign cystosarcoma phylloides.



Figure2 (A-B): Mammography RIGHT BREAST (MLO, CC View) Well defined Lobulated retroareolar mass anteriorly measuring ~3.9x2.2cms indenting the nipple with tubular density posteriorly (dilated duct). Intra ductal malignancy-BIRADS-IVC. Histopatho report- high grade Intra ductal malignancy. Vascular calcification noted in CC View of Left Breast.



B

sonomammogram of the above Lobulated heterogenous retroareolar mass predominantly cystic at 10-12 clock position of Right Breast with diffuse vascularity. Intra ductal malignancy-BIRADS IVC. Histopatho report- high grade Intra ductal malignancy.



Figure 4: MLO VIEW (B) well defined irregularly margined mass in upper outer quadrant with pleomorphic calcification (~7x3.5cms) with adjacent tiny nodule (0.5x0.5cms) and (0.6x0.5cms)~2.5cms from nipple -BIRADS IVC. Histopatho report-Infiltrating intraductal carcinoma.

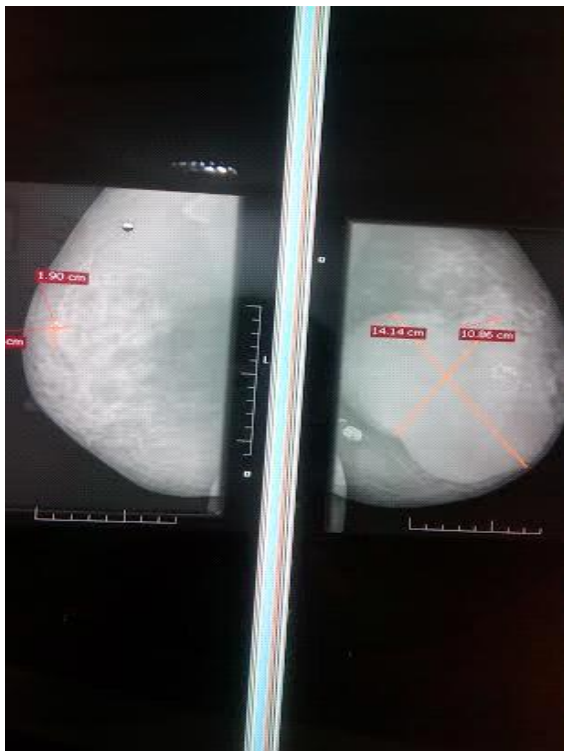


Figure 3: Mammography MLO VIEW (A)of Left breast reveals Large Lobulated retroareolar mass measuring ~14.14x10.86cms ~0.5cms from nipple, posteriorly indenting the muscle plane with intralesional macrocalcifications ?Giant Fibroadenoma? cystosarcoma phylloides-BIRADS IVA. Histopatho report: Fibroadenoma.

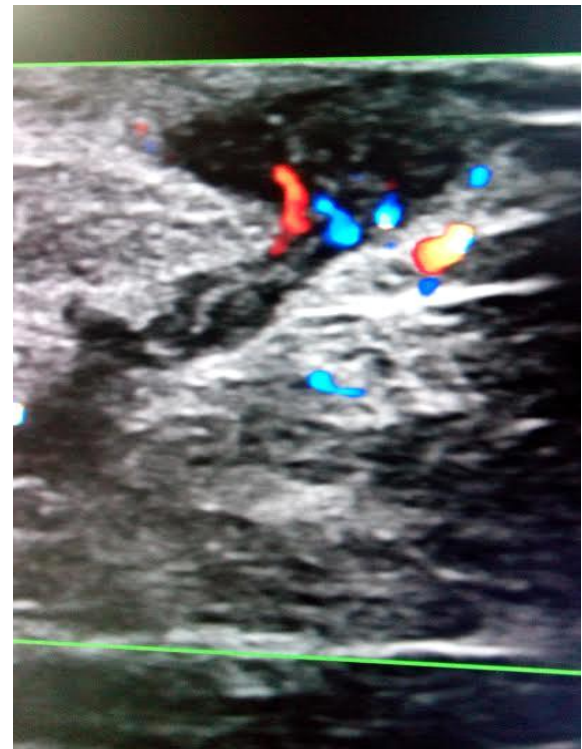


Figure 5: Lactating Right Breast reveal well defined, tubular, hypoechoic, Vascular lesion in retroareolar region at 3 clock position measuring ~1.8 x0.76cms with a sinus measuring ~0.58x0.48cms s/o Breast abscess with a sinus tract.

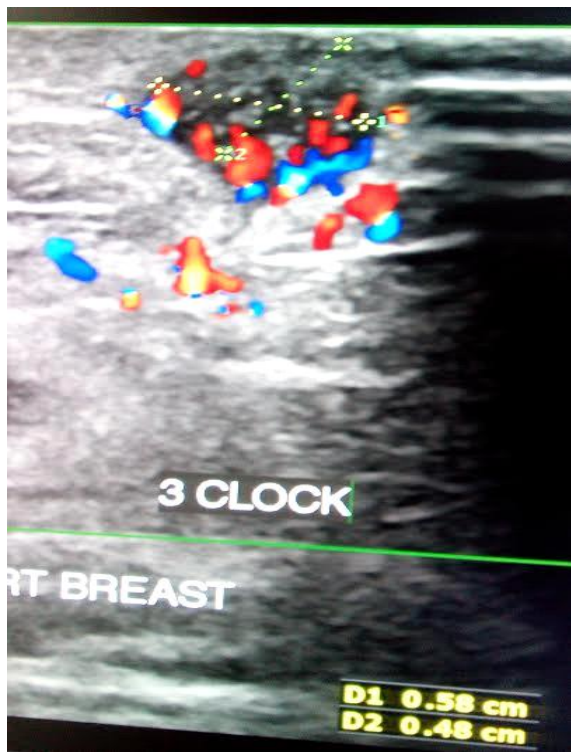


Figure 6: Right Breast reveals abscess in retroareolar region at 3 clock position with a sinus opening (~0.58x0.48cms)

CONCLUSION

Mammography is widely accepted screening tool in 40 years and older and to evaluate clinically suspected breast lesions.

Sonomammogram is a dynamic, painless and a very useful tool for evaluation of breast lesions. Advantages of USG include wide availability, cheap, fast, no ionising radiation and can assess the vascularity of the lesion. Sonomammography has added advantage in guiding FNAC and Biopsies (8)

Mammography is better in detecting Microcalcifications and early detection of occult malignancies. (9)

Self Breast examination and Breast screening must be advised for the early detection of Breast lesions and for further management. (10)

Combined approach of mammography and sonomammogram was

was more accurate and able to distinguish benign from malignant lesion when correlated with histopathology.

REFERECES

1. Virginia L, Rachel B. Detection of ductal carcinoma in situ in women undergoing screening mammography: journal of national cancer institute. 2002; 94(20):1546-1554.
2. Kamath R, Mahajan KS. Study of risk factor of breast cancer among patients attending tertiary hospital. Indian journal of community medicine. 2013; 38(2):95-99.
3. Praveen J, Yasaga. BIRADS. July 2016; Radiopaedia.org.
4. Yojana VN. Evaluation of breast calcification. IJRI. 2009; 19(4):282-286.
5. Sudheer Gokhale. Ultrasound characterization of breast masses. IJRI.2009; 19(3); 243-247.
6. prasad SN, Houser kova D A Combined Mammographic and ultrasonography in the evaluation of breast masses .Biomed pap med Fac univ palacky olomouc, Czech Repub ;2007;15(2)315-22.
7. Sabine M, Sulane W and Achims .Comparison of Written results of Mammography, sonography and MR Mammography for preoperative evaluation of Breast lesions with special emphasis on MR Mammography Breast cancer Res.2001;3(1):55-80.
8. Texitor SH, Kazam E, Combined Mammographic and sonomammographic evaluation of Breast masses. AJR Amj Roentgenol. 1977, 128; 409-17.
9. Svjetlana Mujagić, Mensura Burinal, Jasminka Mustedanagić-Mujanovi, Goran Šarkanović et al. The importance of combining of ultrasound and mammography in breast cancer diagnosis. Acta Medica Academica 2011;40:27-33
10. Mahesh, Kalappa Shetty, Yogesh P. Shah. Prospective Evaluation of the Value of Negative Sonographic and Mammographic Findings in Patients With Palpable Breast Abnormalities of the Breast. 2002 by the American Institute of Ultrasound in Medicine • J Ultrasound Med 21:1211-1216, 2002

How to cite this article: Anitha B. Combined approach of mammography and sonomammogram in the evaluation of breast lesion and correlation with histopathology. Int J Health Sci Res. 2016; 6(11):246-249.
