

Case Report

Hepatic Metastasis of Squamous Cell Carcinoma of Cervix

Nanda J. Patil¹, Dhirajkumar Shukla², Vijay Bonde³¹Professor, ²Assistant Professor, ³Assistant Lecturer,
Department of Pathology, Krishna Institute of Medical Sciences University, Karad.

Corresponding Author: Vijay Bonde

*Received: 21/09/2015**Revised: 15/10/2015**Accepted: 16/10/2015*

ABSTRACT

Background: Squamous cell carcinoma of the cervix is the most common form of cervical neoplasm. Blood borne metastasis is typically a late manifestation of the disease and may disseminate to almost any tissue of the body. Common sites of metastasis are lung, bone, para aortic nodes and supraclavicular nodes. Liver metastasis from cervical cancer is rare with reported incidence of 1.2% to 2.2%.

Case History: A 55year old female patient with history of moderately differentiated squamous cell carcinoma of cervix operated 3 years back presented with complaints of pain in abdomen. Radiological investigation revealed multiple nodular masses in the liver. USG guided FNAC was performed and the diagnosis was given as metastatic squamous cell carcinoma of cervix in liver.

Conclusion: Although liver is the common site for metastasis of carcinoma, squamous cell carcinoma of cervix rarely forms metastasis in liver. We present this case because of its rarity. One should be aware of this rare presentation.

Key words: USG guided FNAC, Hepatic mass, Squamous cell carcinoma of cervix.

INTRODUCTION

Squamous cell carcinoma of the cervix is the most common form of cervical neoplasm. Blood borne metastasis is typically a late manifestation of the disease and may disseminate to almost any tissue of the body. Common sites of metastasis are lung, bone, para-aortic nodes and supraclavicular nodes. [1] Liver metastasis from cervical cancer is rare with reported incidence of 1.2% to 2.2%. [2]

CASE REPORT

A 55year old female patient with history of moderately differentiated squamous cell carcinoma of cervix operated 3 years back presented with complaints of pain in abdomen.

Radiological investigation revealed multiple nodular masses in the liver with no evidence of primary tumor at any other site. USG guided FNAC of hepatic lesion was performed, cellular smears showed neoplastic cells in cohesive clusters (Figure 1), sheets (Figure 2) and many of them scattered singly.

Individual cells were polygonal having enlarged pleomorphic hyperchromatic to vesicular nuclei, inconspicuous nucleoli with moderate amount of cytoplasm with intra-cytoplasmic keratin. (Figure-3). Carcinoembryonic Antigen (CEA) and Alpha-Fetoprotein (AFP) were within normal limits. Thus, the diagnosis was given as metastasis of squamous cell carcinoma of cervix in liver.

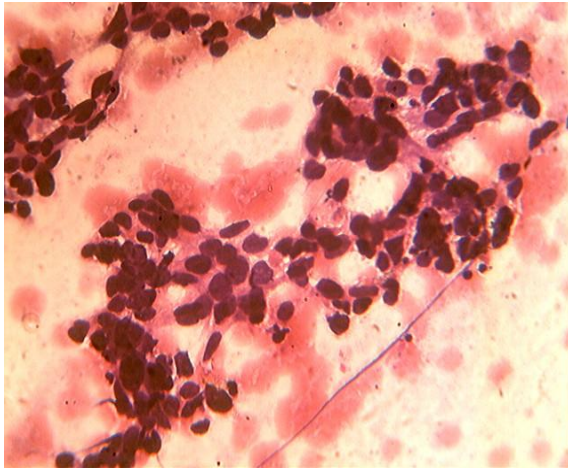


Figure 1- Photomicrograph showing neoplastic cells in cohesive clusters. (H&E,100x)

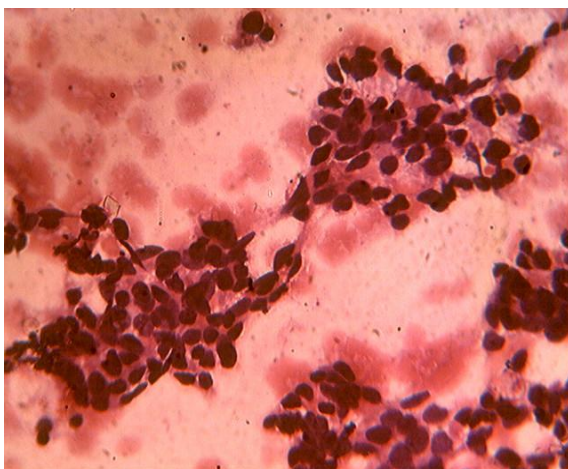


Figure 2-Photomicrograph showing neoplastic cells in sheets (H&E,100x).

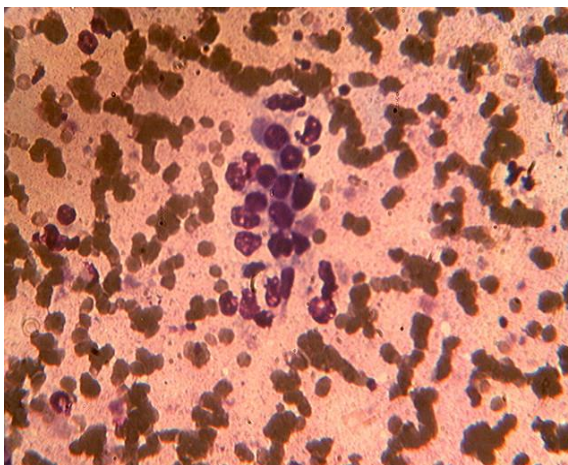


Figure 3- Photomicrograph showing individual neoplastic cells which were polygonal having enlarged pleomorphic hyperchromatic to vesicular nuclei, inconspicuous nucleoli with moderate amount of cytoplasm with intra-cytoplasmic keratin.

DISCUSSION

Carcinoma of the uterine cervix is the most common gynecological

malignancy in developing countries, 15-61% of women with cervical cancer develop distant metastases within first 2 years of completing treatment. [3] In patients who develop distant metastases, the most frequently observed metastatic sites are lung (21%), para-aortic nodes (11%), abdominal cavity (8%) and supraclavicular nodes (7%). [4] Carcinoma of cervix preferentially spreads by direct extension to the adjacent organs and sequentially through lymphatics to pelvic and subsequent para-aortic lymph nodes.

Hematogenous metastasis is less common route of spread. [5] Blood borne metastasis is typically late manifestation of disease and may disseminate to almost any tissue of the body. [6] Liver metastasis from cervical cancer is rare seen in 1.2%-2.2% of cases. The average time of liver metastasis is 39 months. The survival of untreated patients with liver metastasis is 10 months, and 0% at 2 years. Favorable prognostic factors are the absence of extra-hepatic disease, disease-free interval more than 2 years, unilobar disease, and the use of chemotherapy [2] as in our case. Eight months follow up with chemotherapy and radiotherapy in our case is uneventful.

CONCLUSION

Although, liver is the common site for metastasis of carcinoma, squamous cell carcinoma of cervix rarely forms metastasis in liver. We present this case because of its rarity. One should be aware of this rare presentation.

REFERENCES

1. Carvalho L, Azevedo I, Salgado L, Ferreria ES, Henrique R, de Carvalho RG, Vieira E. Squamous cell carcinoma of the cervix metastatic to the spleen- A case report. *Gynecol Oncol* 1997; 67:107-10.
2. Tangjitgamol S., Levenback C.F., Beller U. and Kavanagh J.J., "Role of Surgical Resection for Lung, Liver and Central Nervous System Metastases in Patients with

- Gynecological Cancer: A Literature Review,” International Journal of Gynecological Cancer; 2004,14(3): 399-422.
3. Ries LA, Harkins D, Krapcho M. SEER Cancer Statistics Review, 1975-2003. Bethesda, MD: National Institute; 2006
 4. Fagundes H, Perez CA, Grigsby PW, Lockett MA. Distant metastases after irradiation alone in carcinoma of the uterine cervix. Int J Radiat OncolBiolPhys 1992; 24:197-204.
 5. Carlson V, Delclos L, Fletcher GH. Distant metastases in squamous cell carcinoma of the uterine cervix. Radiology. 1967; 88(5):961-966.
 6. Wastell C. A solitary secondary deposit in the pancreas from a carcinoma of the cervix. Postgrad Med J1966; 42(483):59-61.

How to cite this article: Patil NJ, Shukla DK, Bonde V. Hepatic metastasis of squamous cell carcinoma of cervix. Int J Health Sci Res. 2015; 5(11):427-429.

International Journal of Health Sciences & Research (IJHSR)

Publish your work in this journal

The International Journal of Health Sciences & Research is a multidisciplinary indexed open access double-blind peer-reviewed international journal that publishes original research articles from all areas of health sciences and allied branches. This monthly journal is characterised by rapid publication of reviews, original research and case reports across all the fields of health sciences. The details of journal are available on its official website (www.ijhsr.org).

Submit your manuscript by email: editor.ijhsr@gmail.com OR editor.ijhsr@yahoo.com